



AT-WNP300N

IEEE802.11b/g/n IT2R Wireless
Fast PCI adapter

User Manual

Copyright © 2009 Allied Telesis, Inc.

All rights reserved. No part of this publication may be reproduced without prior written permission from Allied Telesis, Inc.

Microsoft and Internet Explorer are registered trademarks of Microsoft Corporation. Netscape Navigator is a registered trademark of Netscape Communications Corporation. All other product names, company names, logos or other designations mentioned herein are trademarks or registered trademarks of their respective owners.

Allied Telesis, Inc. reserves the right to make changes in specifications and other information contained in this document without prior written notice. The information provided herein is subject to change without notice. In no event shall Allied Telesis, Inc. be liable for any incidental, special, indirect, or consequential damages whatsoever, including but not limited to lost profits, arising out of or related to this manual or the information contained herein, even if Allied Telesis, Inc. has been advised of, known, or should have known, the possibility of such damages.

SAFETY NOTICE

- ✓ Do not change any component.
- ✓ Only qualified technicians are allowed to service the equipment.
- ✓ Observe safety precautions to avoid electric shock

LIMITATION OF LIABILITY AND DAMAGES

THE PRODUCT AND THE SOFTWARES WITHIN ARE PROVIDED "AS IS," BASIS. THE MANUFACTURER AND MANUFACTURER'S RESELLERS (COLLECTIVELY REFERRED TO AS "THE SELLERS") DISCLAIM ALL WARRANTIES, EXPRESS, IMPLIED OR STATUTORY, INCLUDING WITHOUT LIMITATION THE IMPLIED WARRANTIES OF NON-INFRINGEMENT, MERCHANTABILITY OR FITNESS FOR A PARTICULAR PURPOSE, OR ANY WARRANTIES ARISING FROM COURSE OF DEALING, COURSE OF PERFORMANCE, OR USAGE OF TRADE. IN NO EVENT WILL THE SELLERS BE LIABLE FOR DAMAGES OR LOSS, INCLUDING BUT NOT LIMITED TO DIRECT, INDIRECT, SPECIAL WILFUL, PUNITIVE, INCIDENTAL, EXEMPLARY, OR CONSEQUENTIAL, DAMAGES, DAMAGES FOR LOSS OF BUSINESS PROFITS, OR DAMAGES FOR LOSS OF BUSINESS OF ANY CUSTOMER OR ANY THIRD PARTY ARISING OUT OF THE USE OR THE INABILITY TO USE THE PRODUCT OR THE SOFTWARES, INCLUDING BUT NOT LIMITED TO THOSE RESULTING FROM DEFECTS IN THE PRODUCT OR SOFTWARE OR DOCUMENTATION, OR LOSS OR INACCURACY OF DATA OF ANY KIND, WHETHER BASED ON CONTRACT, TORT OR ANY OTHER LEGAL THEORY, EVEN IF THE PARTIES HAVE BEEN ADVISED OF THE POSSIBILITY OF SUCH DAMAGES. THE ENTIRE RISK AS TO THE RESULTS AND PERFORMANCE OF THE PRODUCT OR ITS SOFTWARE IS ASSUMED BY CUSTOMER. BECAUSE SOME STATES DO NOT ALLOW THE EXCLUSION OR LIMITATION OF LIABILITY FOR DAMAGES, THE ABOVE LIMITATION MAY NOT APPLY TO THE PARTIES. IN NO EVENT WILL THE SELLERS' TOTAL CUMULATIVE LIABILITY OF EACH AND EVERY KIND IN RELATION TO THE PRODUCT OR ITS SOFTWARE EXCEED THE AMOUNT PAID BY CUSTOMER FOR THE PRODUCT.

ELECTRICAL SAFETY AND EMISSIONS STANDARDS

This product meets the following standards.

U.S. Federal Communications Commission Interference Statement

This equipment has been tested and found to comply with the limits for a Class B digital device, pursuant to Part 15 of the FCC Rules. These limits are designed to provide reasonable protection against harmful interference in a residential installation. This equipment generates, uses and can radiate radio frequency energy and, if not installed and used in accordance with the instructions, may cause harmful interference to radio communications. However, there is no guarantee that interference will not occur in a particular installation. If this equipment does cause harmful interference to radio or television reception, which can be determined by turning the equipment off and on, the user is encouraged to try to correct the interference by one of the following measures:

- Reorient or relocate the receiving antenna.
- Increase the separation between the equipment and receiver.
- Connect the equipment into an outlet on a circuit different from that to which the receiver is connected.
- Consult the dealer or an experienced radio/TV technician for help.

FCC Caution: Any changes or modifications not expressly approved by the party responsible for compliance could void the user's authority to operate this equipment.

This device complies with Part 15 of the FCC Rules. Operation is subject to the following two conditions: (1) This device may not cause harmful interference, and (2) this device must accept any interference received, including interference that may cause undesired operation.

Radiation Exposure Statement: This equipment complies with FCC radiation exposure limits set forth for an uncontrolled environment. This equipment should be installed and operated with minimum distance 20cm between the radiator & your body.

This transmitter must not be co-located or operating in conjunction with any other antenna or transmitter.

The availability of some specific channels and/or operational frequency bands are country dependent and are firmware programmed at the factory to match the intended destination. The firmware setting is not accessible by the end user.

CE Marking Warning

This device complies with the essential requirements of the R&TTE Directive 1999/5/EC. The following test methods have been applied in order to prove presumption of conformity with the essential requirements of the R&TTE Directive 1999/5/EC:

EN 60950-1: 2006

Safety of Information Technology Equipment

EN 50385: 2002

Product standard to demonstrate the compliance of radio base stations and fixed terminal stations for wireless telecommunication systems with the basic restrictions or the reference levels related to human exposure to radio frequency electromagnetic fields (110MHz - 40 GHz) - General public

EN 300 328 V1.7.1 (2006-10)

Electromagnetic compatibility and Radio spectrum Matters (ERM); Wideband transmission systems; Data transmission equipment operating in the 2,4 GHz ISM band and using wide band modulation techniques; Harmonized EN covering essential requirements under article 3.2 of the R&TTE Directive

EN 301 489-1 V1.8.1 (2008-04)

Electromagnetic compatibility and Radio Spectrum Matters (ERM); ElectroMagnetic Compatibility (EMC) standard for radio equipment and services; Part 1: Common technical requirements

EN 301 489-17 V1.3.2 (2008-04)

Electromagnetic compatibility and Radio spectrum Matters (ERM); ElectroMagnetic Compatibility (EMC) standard for radio equipment and services; Part 17: Specific conditions for 2,4 GHz wideband transmission systems.

This device is a 2.4 GHz wideband transmission system (transceiver), intended for use in all EU member states and EFTA countries, except in France and Italy where restrictive use applies.

In Italy the end-user should apply for a license at the national spectrum authorities in order to obtain authorization to use the device for setting up outdoor radio links and/or for supplying public access to telecommunications and/or network services.

This device may not be used for setting up outdoor radio links in France and in some areas the RF output power may be limited to 10 mW EIRP in the frequency range of 2454 – 2483.5 MHz. For detailed information the end-user should contact the national spectrum authority in France.

CONTENTS

LIMITATION OF LIABILITY AND DAMAGES	1
Preface	9
Purpose of This Guide	9
How This Guide is Organized.....	9
Document Conventions	9
Contacting Allied Telesis	10
Online Support.....	10
Email and Telephone Support	10
Warranty	10
Where to Find Web-based Guides	10
Returning Products	10
Sales or Corporate Information	10
Firmware & Software Updates.....	10
Tell Us What You Think	10
Chapter 1: Overview	11
Features	11
Back View	11
LEDs.....	11
Chapter 2: Installation	13
Reviewing Safety Precautions	13
Unpacking the Wireless Adapter	13
Hardware Installation	13
Installing the Driver and the Utility	15
Warranty Registration	16
Chapter 3: PC Settings	17
<Windows Vista>.....	17
<Windows xp>	18
Chapter 4: Configure Wireless Network	20
Run AT-WNP300N Wireless Utility	20
The First View of AT-WNP300N Wireless Utility	20
Start Wireless Network Connection.....	20
Chapter 5: Utility Introduction	31
Profile	31
Network	32
Advanced	32
Statistics	33
WMM	33
WPS	34
Radio on/off	35
About.....	35
Chapter 6: Troubleshooting.....	36
I Cannot Build Wireless Connection	36
The Hardware Status Is Incorrect	36
In Device Manager, the Device Shows a Cross.....	36
Appendix A: Technical Specifications	37
Physical Specifications.....	37
Environmental Specifications	37

Safety and Electromagnetic Emissions Certifications..... 37

Appendix B: Radio Bands..... 38

FIGURES

Figure 1: Back View	11
Figure 2: Installing Adapter into PC.....	14
Figure 3: Location of the Antenna Connectors.....	14
Figure 4: Connecting Antennas.....	14
Figure 5: Canceling Hardware Notification	15
Figure 6: Starting the Installation.....	15
Figure 7: Completing the Installation	15
Figure 8: Wireless Utility.....	16
Figure 9: Control Panel.....	17
Figure 10: Network and Sharing Center.....	17
Figure 11: Wireless Connection Status.....	18
Figure 12: Internet Protocol version 4 (TCP/IP).....	18
Figure 13: Internet Protocol Version 4 (TCP/IPv4) Properties	18
Figure 14: Wireless Connection Properties.....	19
Figure 15: Internet Protocol (TCP/IP)	19
Figure 16: Internet Protocol (TCP/IP) Properties	19
Figure 17: The First View of AT-WNP300N Wireless Utility	20
Figure 18: Select a Network.....	21
Figure 19: Configure Profile.....	21
Figure 20: Configure Auth./Encry.....	21
Figure 21: Active an Un-secured Network	22
Figure 22: Select a Network.....	22
Figure 23: Configure Profile.....	22
Figure 24: Configure Auth./Encry.....	22
Figure 25: Active a WEP Network.....	23
Figure 26: Select a Network.....	23
Figure 27: Configure Profile.....	23
Figure 28: Configure Auth./Encry.....	23
Figure 29: Active a WPA-PSK/WPA2-PSK Network	24
Figure 30: Config Utility.....	24
Figure 31: Configure Profile Name.....	24
Figure 32: Configure Auth./Encry.....	24
Figure 33: Active a Non-broadcasting Network.....	25
Figure 34: Select a Non-broadcasting SSID	25
Figure 35: Configure Profile Name.....	25
Figure 36: Configure Auth./Encry.....	25
Figure 37: Active a Non-broadcasting Network.....	26

Figure 38: WPS Button on Wireless Router	26
Figure 39: Push Button Connection.....	26
Figure 40: WPS Successfully.....	27
Figure 41: Push Button Connection.....	27
Figure 42: WPS Successfully.....	27
Figure 43: PIN Code.....	28
Figure 44: WPS Successfully.....	28
Figure 45: Enrollee Mode.....	29
Figure 46: Click on PIN	29
Figure 47: WPS Successfully.....	29
Figure 48: Connect to a Regular Network	30
Figure 49: Profile	31
Figure 50: Network.....	32
Figure 51: Advanced.....	32
Figure 52: Statistics.....	33
Figure 53: WMM	34
Figure 54: WPS.....	34
Figure 55: Radio On/Off.....	35
Figure 56: About.....	35

Preface

Purpose of This Guide

This guide is intended for customers and/or network administrators who are responsible for installing and maintaining the AT-WNP300N IEEE802.11b/g/n IT2R Wireless Fast PCI adapter.

How This Guide is Organized

This guide contains instructions on how to install and configure AT-WNP300N IEEE802.11b/g/n IT2R Wireless Fast PCI adapter.

- Chapter 1** **Overview**, describes the features, LEDs and ports on the equipment.
- Chapter 2** **Installation**, describes how to install and configure the equipment.
- Chapter 3** **PC Settings**, describes how to prepare your PC for connecting to wireless network.
- Chapter 4** **Configure Wireless Network**, guides you to set up a wireless network step by step.
- Chapter 5** **Utility Introduction**, describes detail function in AT-WNP300N Wireless Utility.
- Chapter 6** **Troubleshooting**, describes what you should do when the device does not operate correctly.

Document Conventions

This guide uses several conventions that you should become familiar with before you begin to install the product:



Note

A note provides additional information. Please go to the Allied Telesis website <http://www.alliedtelesis.com> for the translated safety statement in your language.



Warning

A warning indicates that performing or omitting a specific action may result in bodily injury.



Caution

A caution indicates that performing or omitting a specific action may result in equipment damage or loss of data.

Contacting Allied Telesis

This section provides Allied Telesis contact information for technical support as well as sales and corporate information.

Online Support

You can request technical support online by accessing the Allied Telesis Knowledge Base: <http://www.alliedtelesis.com/kb/>. You can use the Knowledge Base to submit questions to our technical support staff and review answers to previously asked questions.

Email and Telephone Support

For Technical Support via email or telephone, refer to the Support & Services section of the Allied Telesis web site: <http://www.alliedtelesis.com/support/>.

Warranty

For product registration and warranty conditions please visit Allied Telesis website: <http://www.alliedtelesis.com/support/warranty/>

Where to Find Web-based Guides

The installation and user guides for all Allied Telesis products are available in portable document format (PDF) on our web site at www.alliedtelesis.com. You can view the documents online or download them onto a local workstation or server.

Returning Products

Products for return or repair must first be assigned a return materials authorization (RMA) number. A product sent to Allied Telesis without an RMA number will be returned to the sender at the sender's expense.

To obtain an RMA number, contact Allied Telesis Technical Support through our web site: <http://www.alliedtelesis.com/support/>.

Sales or Corporate Information

You can contact Allied Telesis for sales or corporate information through our web site: <http://www.alliedtelesis.com/>. To find the contact information for your country, select Contact Us -> Worldwide Contacts.

Firmware & Software Updates

New releases of firmware or software for our managed products are available from either of the following Internet sites:

- Allied Telesis web site: <http://www.alliedtelesis.com/support/software/>
- Allied Telesis FTP server: <ftp://ftp.alliedtelesis.com/>

If you prefer to download new firmware or software from the Allied Telesis FTP server from your workstation's command prompt, you will need FTP client software and you must log in to the server. Enter "anonymous" for the user name and your email address for the password.

Tell Us What You Think

If you have any comments or suggestions on how we might improve this or other Allied Telesis documents, please contact us at <http://www.alliedtelesis.com>.

Chapter 1: Overview

The AT-WNP300N IEEE802.11b/g/n IT2R Wireless Fast PCI adapter is for your desktop and mini PC. It provides continuous, high-speed access between your PC and wireless access point. You administer the AT-WNP300N IEEE802.11b/g/n IT2R Wireless Fast PCI adapter using the AT-WNP300N Wireless Utility.

Features

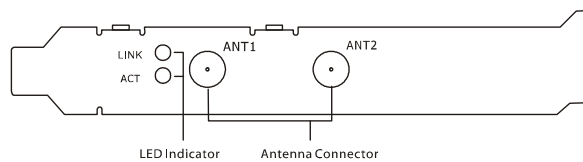
The features of the AT-WNP300N IEEE802.11b/g/n IT2R Wireless Fast PCI adapter include:

- Provide theoretical 150Mbps throughput for uploading and downloading.
- Support WPA, WPA2 wireless encryption.
- Support Wi-Fi Protected Setup (WPS), providing quick secured connection.
- Long and short PCI covers suitable for desktop and mini PC.
- Removable SMA antenna offers upgrade potential.

Back View

For the flexible use in desktop PC and mini PC, AT-WNP300N IEEE802.11b/g/n IT2R Wireless Fast PCI adapter provides two PCI covers. You can change the cover as need. There are two SMA antenna connectors on the cover, along with two LEDs showing the link and activity status.

Suitable for Desktop PC



Suitable for Mini PC

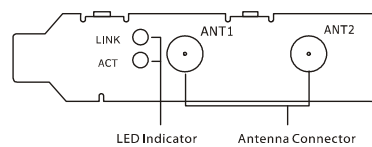


Figure 1: Back View

LEDs

The Link and Activity LED on the AT-WNP300N IEEE802.11b/g/n IT2R Wireless Fast PCI adapter is described in Table 1.

Table 1: LED Indicator

LED	State	Description
Link	Off	The adapter is radio off.
	On	The adapter is connected
Activity	Fast Blinking	The adapter is disconnected
	Off	The adapter is radio off.
	Slow Blinking	The adapter is disconnected or connected
	Fast Blinking	Data transmitting

Chapter 2: Installation

Reviewing Safety Precautions

Please review the following safety precautions before you begin to install the AT-WNP300N IEEE802.11b/g/n IT2R Wireless Fast PCI adapter.



Warning

Do not work on equipment or cables during periods of lightning activity.



Warning

Power off your PC and unplug the power cord before installation.



Warning

Operating Temperature. This product is designed for a maximum ambient temperature of 40°C.

All Countries: Install product in accordance with local and National Electrical Codes.



Caution

Do not install in direct sunlight, or a damp or dusty place.

Unpacking the Wireless Adapter

To unpack the AT-WNP300N IEEE802.11b/g/n IT2R Wireless Fast PCI adapter, perform the following procedure:

1. Remove all components from the shipping package.



Note: Store the packing material in a safe location. You must use the original shipping material if you need to return the unit to Allied Telesis.

2. Place the adapter on a secure, level surface.
3. Ensure that the following hardware components are included in your shipping package. If any item is missing or damaged, contact your Allied Telesis sales representative for assistance.

Package Contents

- One AT-WNP300N IEEE802.11b/g/n IT2R Wireless Fast PCI adapter
- Two antennas
- Two PCI covers
- Driver and Utility CD-ROM
- This installation guide

Hardware Installation

To install AT-WNP300N IEEE802.11b/g/n IT2R Wireless Fast PCI adapter into your PC, perform the following procedure:



Note: AT-WNP300N IEEE802.11b/g/n IT2R Wireless Fast PCI adapter is compatible with Windows 2000, XP, and Vista. Check your operating system before installation.

Note: A screw driver is necessary to process the following operation.

1. Switch off your PC, unplug the power cord, and remove the case.
2. Choose an open PCI slot and remove the screw holding the PCI slot cover.
3. Install your wireless adapter and firmly press down on the mounting bracket. Then screw the mounting bracket, as shown in Figure 2.

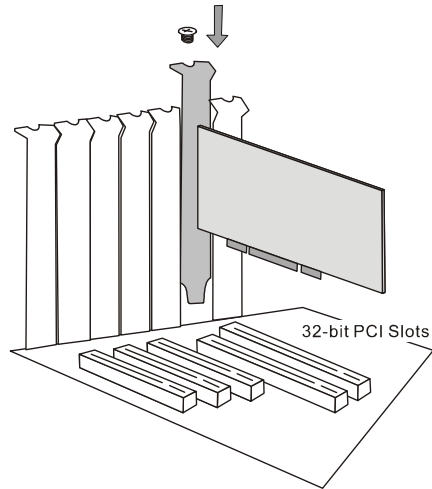


Figure 2: Installing Adapter into PC

4. Locate the antenna connectors on the back of the AT-WNP300N IEEE802.11b/g/n IT2R Wireless Fast PCI adapter, as shown in Figure 3.

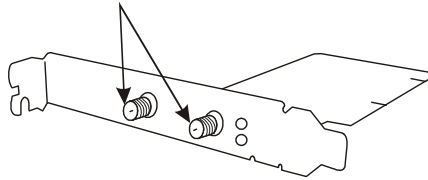


Figure 3: Location of the Antenna Connectors

5. Screw antennas to connectors, as shown in Figure 3.

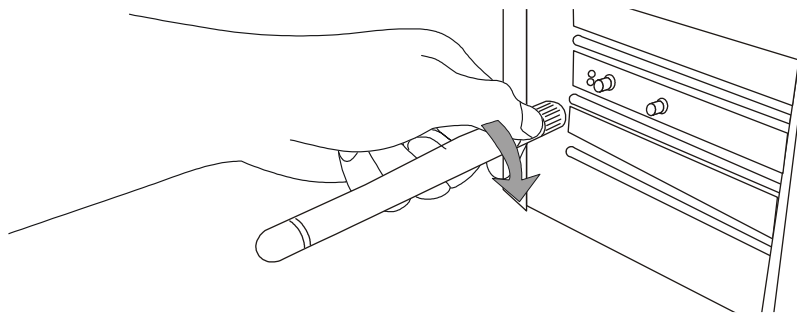


Figure 4: Connecting Antennas

You can try repositioning antennas until you get the best signal strength.

Installing the Driver and the Utility

To make the adapter work properly, you need to install the driver and the utility. Please perform the following procedure:

1. Switch on your PC and insert the CD-Rom, which is contented in the shipping package.
2. When you see the notification as shown in Figure 5, click on “Cancel” to skip the process.

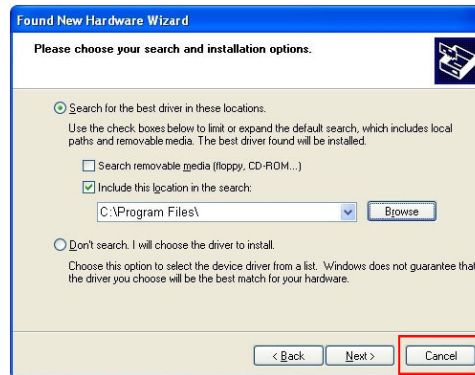


Figure 5: Canceling Hardware Notification

3. Run the CD-Rom. Click on “Install” to start the installation, as shown in Figure 6.

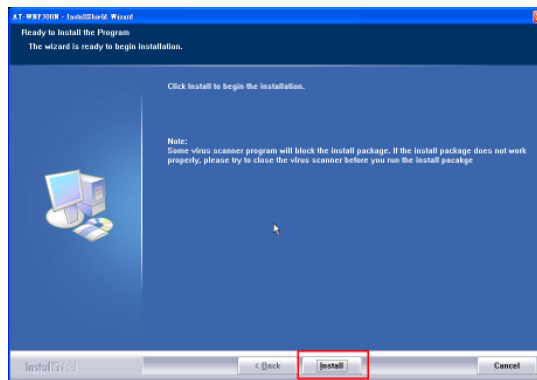


Figure 6: Starting the Installation

4. Click on “Finish” when the installation is completed, as shown in Figure 7.

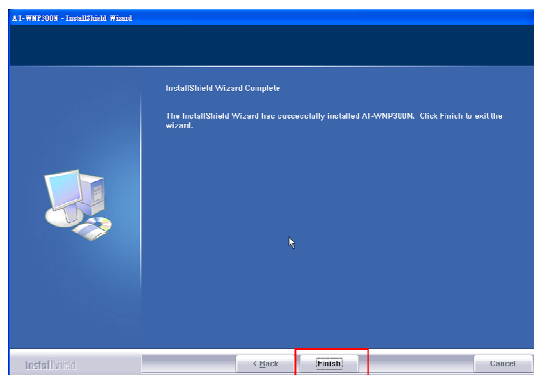


Figure 7: Completing the Installation

After the installation, the Wireless Utility shows up, as shown in Figure 8, and ready for wireless connection.

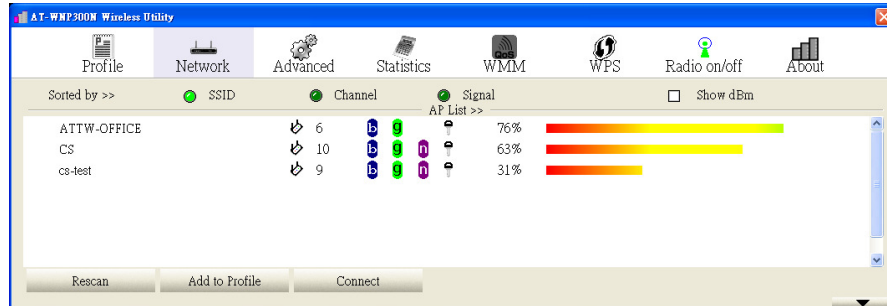


Figure 8: Wireless Utility

Warranty Registration

After installing your wireless adapter, please visit <http://www.alliedtelesis.com/support/warranty/> to register your product and check warranty conditions.

Chapter 3: PC Settings

Before you connect AT-WNP300N IEEE802.11b/g/n IT2R Wireless Fast PCI adapter to wireless router, you need to check your PC settings. Please perform the following procedure.

<Windows Vista>

1. Go to “Start”→”Control Panel”.

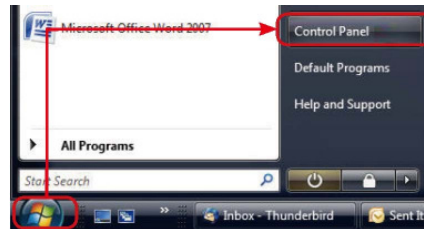


Figure 9: Control Panel

2. In “Control Panel”, double click on “Network and Sharing Center”. Click on “View Status” under wireless network.

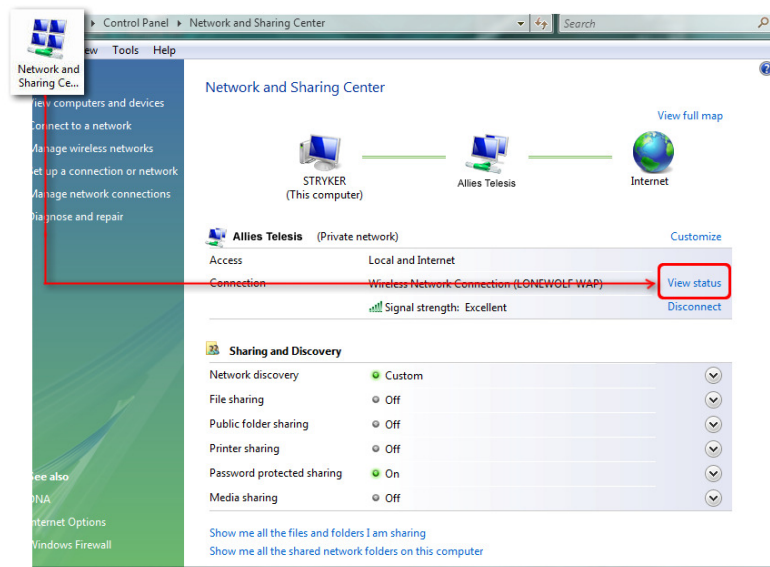


Figure 10: Network and Sharing Center

3. Click on “Properties”.

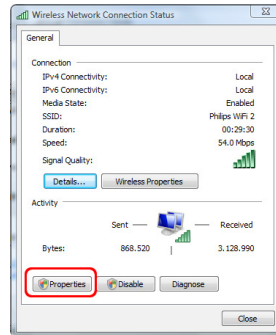


Figure 11: Wireless Connection Status

4. In “Networking” tab, select “Internet Protocol version 4 (TCP/IPv4)” and then click on “Properties”.

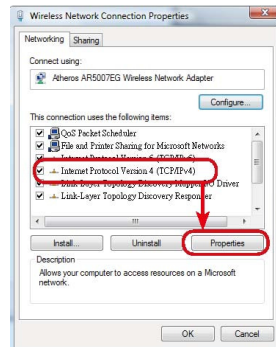


Figure 12: Internet Protocol version 4 (TCP/IP)

5. In “General” tab, if the AP you use provides DHCP server, you are suggested to select both “Obtain an IP address automatically” and “Obtain DNS server address automatically”. Otherwise, please configure your IP address to obtain a specific IP address.

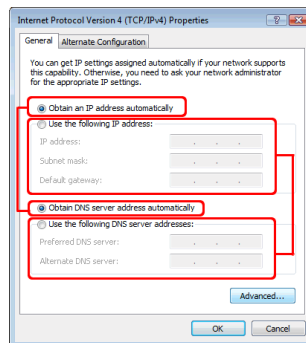


Figure 13: Internet Protocol Version 4 (TCP/IPv4) Properties

<Windows xp>

1. In “Control Panel”, double click on “Network Connections” to open it.



2. Right click on “Wireless Connection” and select “Properties”.

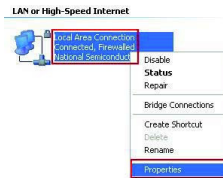


Figure 14: Wireless Connection Properties

3. In “General” tab, select “Internet Protocol (TCP/IP)” and then click on “Properties”.

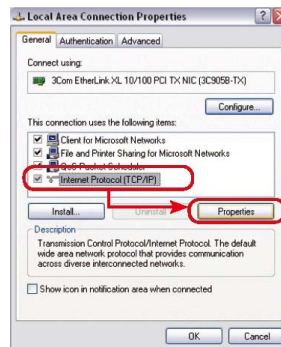


Figure 15: Internet Protocol (TCP/IP)

4. In “General” tab, if the AP you use provides DHCP server, you are suggested to select both “Obtain an IP address automatically” and “Obtain DNS server address automatically”. Otherwise, please configure your IP address to obtain a specific IP address.

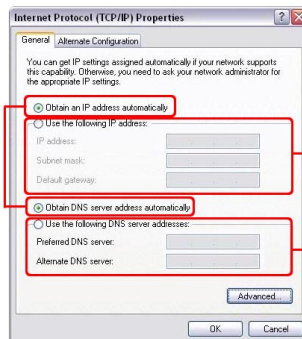


Figure 16: Internet Protocol (TCP/IP) Properties

Chapter 4: Configure Wireless Network

You can configure your wireless network by AT-WNP300N Wireless Utility in Windows Xp, Vista, and 2000. Before the configuration, please confirm that the wireless adapter is within the range of wireless AP. Weak signal might result in connection failure.

Run AT-WNP300N Wireless Utility

After installing AT-WNP300N Wireless Utility on your computer, AT-WNP300N IEEE802.11b/g/n IT2R Wireless Fast PCI adapter will automatically search and connect to an open wireless network nearby. Please double click on icon at the tray to open AT-WNP300N Wireless Utility.



Note: If you do not see the icon at the tray, go to “Start” → “All Programs” → “AT-WNP300N” and click on “AT-WNP300N Wireless Utility” to open it.

The First View of AT-WNP300N Wireless Utility

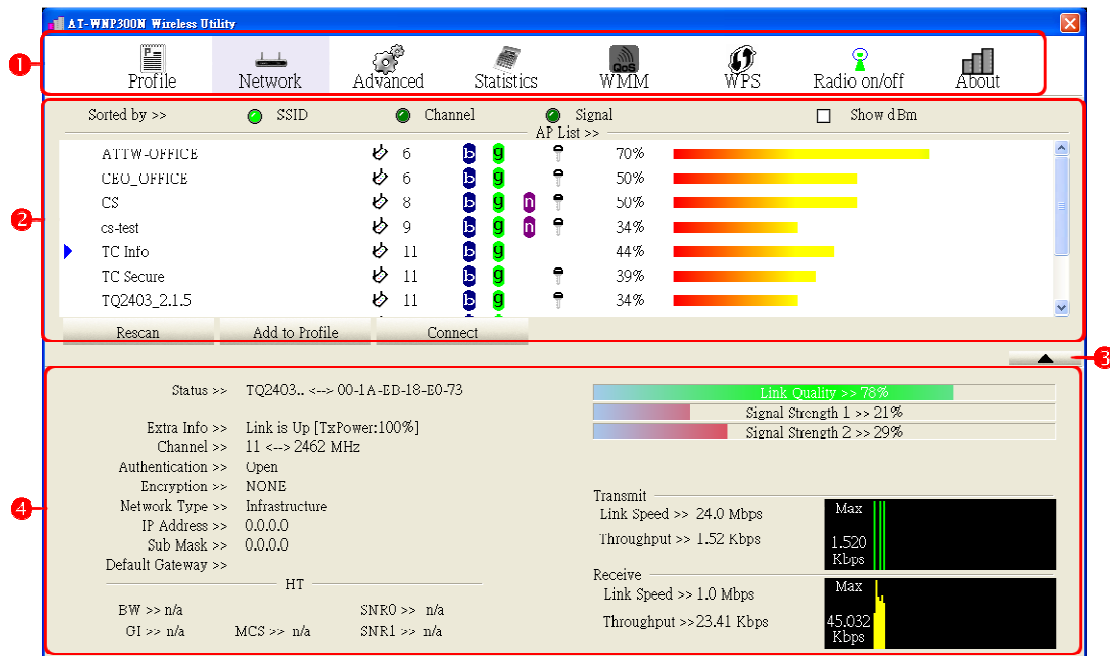


Figure 17: The First View of AT-WNP300N Wireless Utility

❶	Main Menu	To configure the wireless adapter. Please refer to Chapter 5: Utility Introduction for the details
❷	Configuration	It shows main part of configuration
❸	See more/less	Switch to see more or less information
❹	Connection Status	It shows current connection status

Start Wireless Network Connection

This session describes the procedure of connecting to a wireless AP. You need to configure AT-WNP300N IEEE802.11b/g/n IT2R Wireless Fast PCI adapter in accordance with the wireless AP's encryption setting.

Connect to an Un-secured Network

Please perform the following procedure to connect to an un-secured network.

1. Go to “Network”, select the AP you want to connect to, and then click on “Add to Profile”.

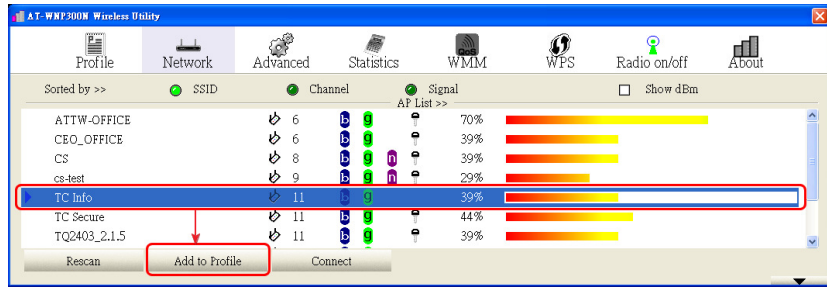


Figure 18: Select a Network



Note: icon in the AP List means it is a secured network.

2. In “System Config” tab, input a Profile Name to identify.

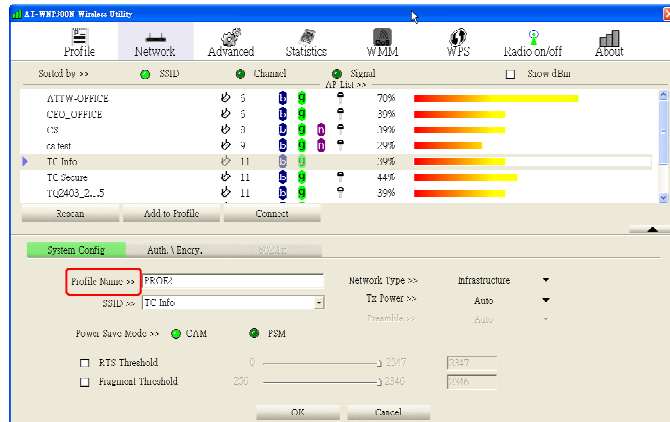


Figure 19: Configure Profile

3. In “Auth./Encry.” Tab, confirm that the Authentication is “Open” and the Encryption is “None”.

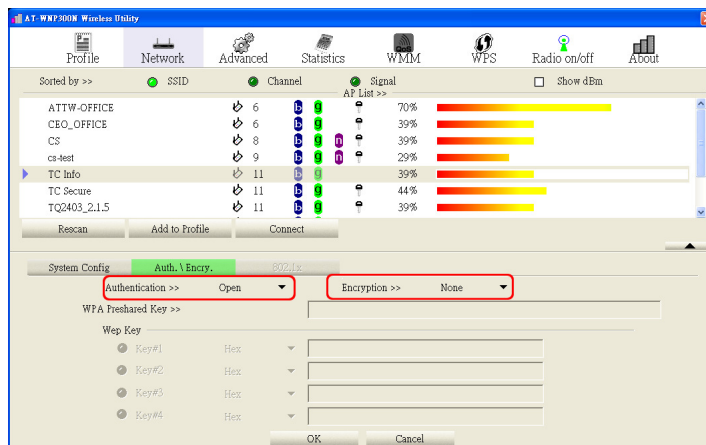


Figure 20: Configure Auth./Encry.

4. Click on “OK”.
5. In “Profile” tab, select the profile you want to connect to, and then click on “Activate”.

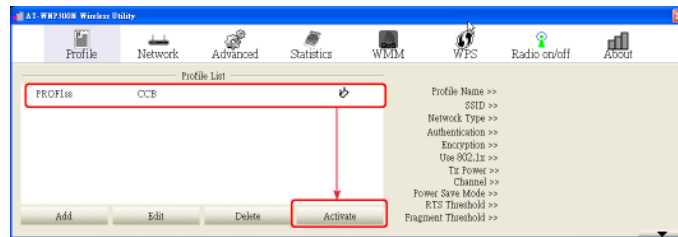


Figure 21: Active an Un-secured Network

Connect to a WEP Network

Please perform the following procedure to connect to a WEP network.

1. In “Network” tab, select the AP you want to connect to, and then click on “Add to Profile”.

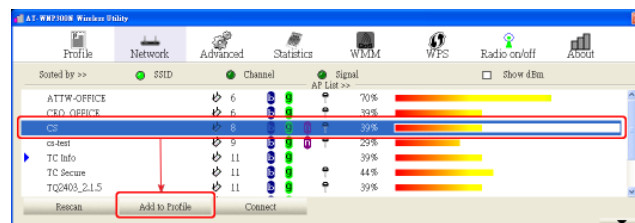


Figure 22: Select a Network

2. In “System Config” tab, give the profile a name to identify.

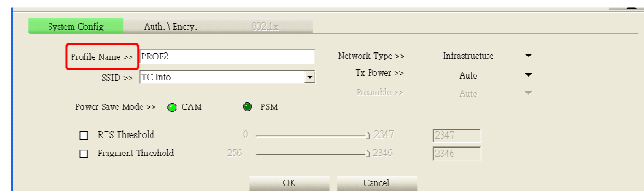


Figure 23: Configure Profile

3. In “Auth./Encry.” tab, confirm that the Authentication and Encryption setting is corresponding to the wireless AP. Input the Key and then click on “OK” to apply the settings.

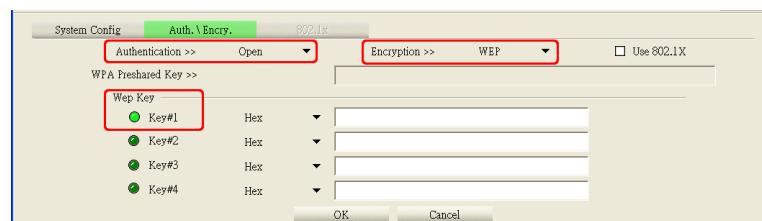


Figure 24: Configure Auth./Encry.

4. In “Profile” tab, select the profile you want to connect to, and then click on “Activate”.

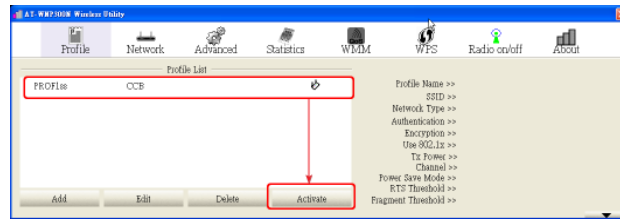


Figure 25: Active a WEP Network



Note: Hex code uses 0-9, a-f characters; ASCII code uses 0-9, a-z characters. All settings must be exactly the same with the wireless AP; otherwise it will result in a failure.

Connect to a WPA-PSK/WPA2-PSK Network

Please perform the following procedure to connect to a WPA-PSK/WPA2-PSK network.

1. In “Network” tab, select the AP you want to connect to, and then click on “Add to Profile”.

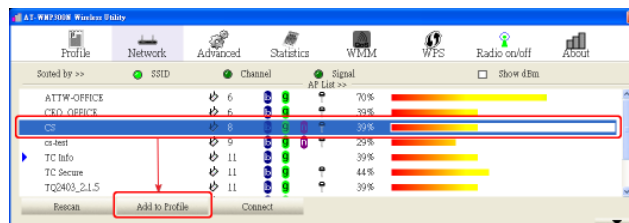


Figure 26: Select a Network

2. In “System Config” tab, give the profile a name to identify.

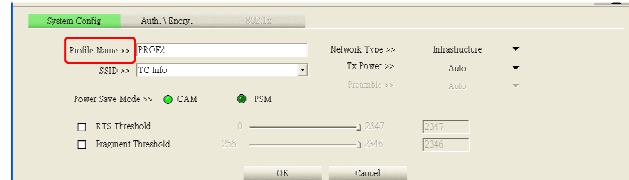


Figure 27: Configure Profile

3. In “Auth./Encry.” tab, confirm that the Authentication and Encryption setting is corresponding to the wireless AP. Input the Key and then click on “OK” to apply the settings.

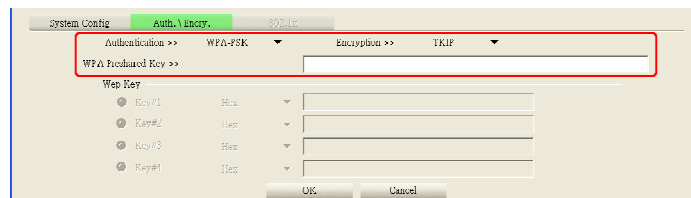


Figure 28: Configure Auth./Encry.

4. In “Profile” tab, select the profile you want to connect to, and then click on “Activate”.

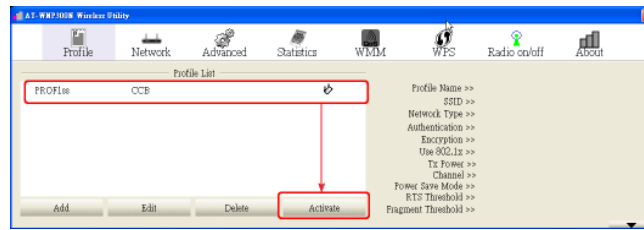


Figure 29: Active a WPA-PSK/WPA2-PSK Network



Note: All settings must be exactly the same with the wireless AP, otherwise it will result in a failure.

Connect to a Non-broadcasting Network

For security reasons, wireless AP might hide its SSID. To connect to a non-broadcasting network, you are prompted for a SSID and a key. You can start either with “Profile” or “Network”. Please perform the following procedure.

<Start from Profile>

1. In Profile tab, click on “Add”.

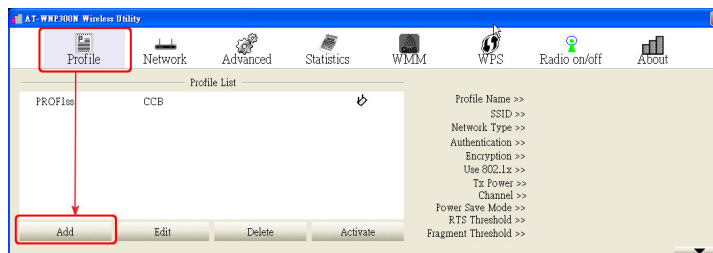


Figure 30: Config Utility

2. Give the profile a name to identify, and then input SSID. The SSID must be exactly the same with the wireless AP.

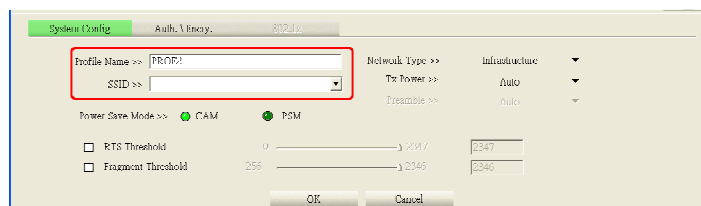


Figure 31: Configure Profile Name

3. In “Auth./Encry.” tab, configure corresponding setting, including authentication, encryption and the Key. Click on “OK” to apply the settings.

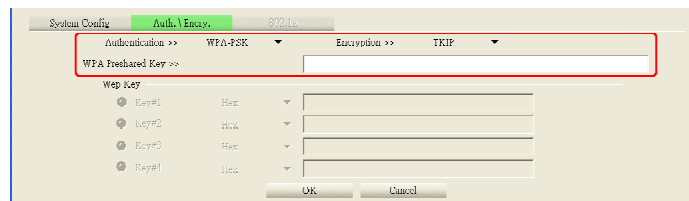


Figure 32: Configure Auth./Encry.

- In “Profile” tab, select the profile from profile list, and then click on “Active”.

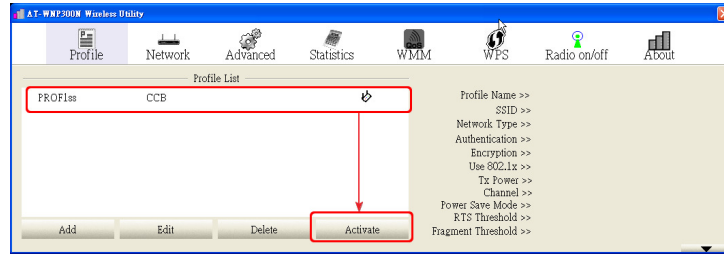


Figure 33: Active a Non-broadcasting Network

Note: The SSID and encryption settings must be exactly the same with the wireless AP, otherwise it will result in a failure.

<Start from Network>

- In “Network” tab, select the AP you want to connect to. Non-broadcasting SSID is blank in SSID column, as shown in figure 34. Click on “Add to Profile”.

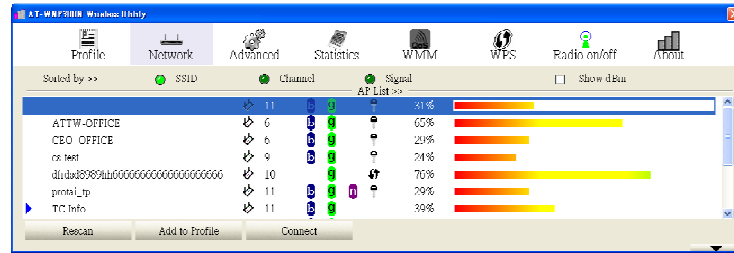


Figure 34: Select a Non-broadcasting SSID

- In “System Config” tab, give the profile a name to identify, and then input SSID. The SSID must be exactly the same with the wireless AP.

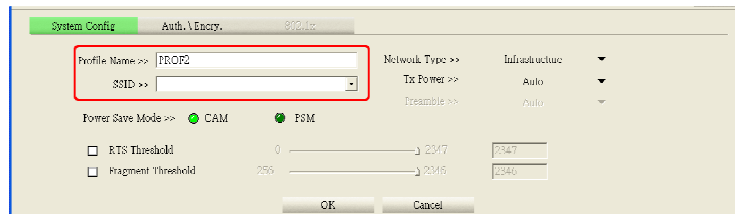


Figure 35: Configure Profile Name

- In “Auth.\Encry” tab, configure corresponding setting, including Authentication, Encryption and the Key. Click on “OK” to apply the settings.

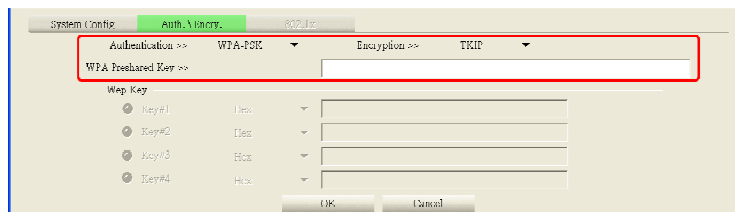


Figure 36: Configure Auth./Encry.

- In “Profile” tab, select the profile you want to connect to, and then click on “Activate”.

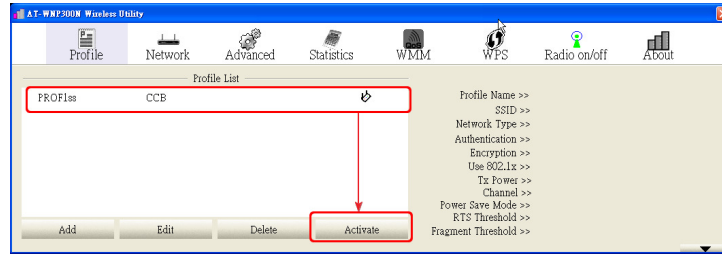


Figure 37: Active a Non-broadcasting Network



Note: The SSID and encryption settings must be exactly the same with the wireless AP, otherwise it will result in a failure.

Wireless Protected Setup (WPS)

Wireless Protected Setup (WPS) provides an easy way to connect to a wireless network. To apply WPS, the wireless AP should be compatible with WPS standard. There are several ways to implement WPS connection. Please perform one of the following procedures.

WPS Button

- Push WPS button on the wireless AP to generate WPS signal.

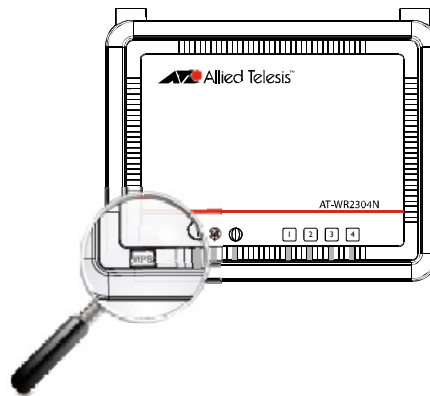


Figure 38: WPS Button on Wireless Router

- In AT-WNP300N Wireless Utility, go to “WPS”. Click on “Rescan” to get the WPS signal from wireless AP.

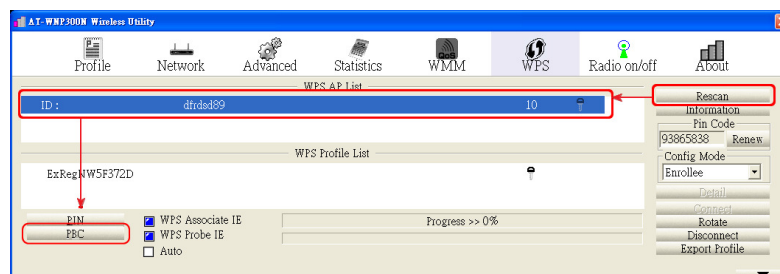


Figure 39: Push Button Connection

3. Select the wireless AP from WPS AP List, and then click on “PBC” to implement the connection. As the connection succeeds, the network is shown in the WPS Profile list.

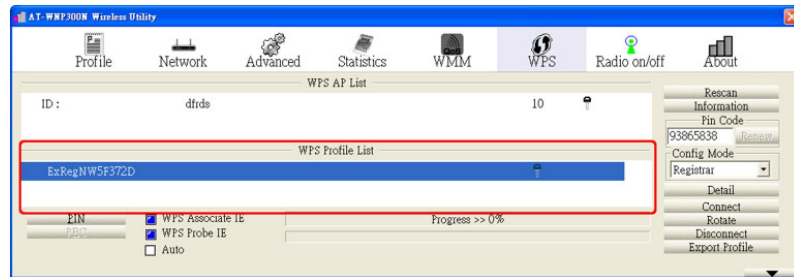


Figure 40: WPS Successfully



Note: After pushing WPS button on the wireless AP, you need to click on “PBC” button in 120 seconds. Otherwise you need to perform the procedure from step 1.

Push Button Connection (PBC)

If the wireless AP does not provide hardware WPS button, you need to apply WPS in the utility. The interface and terminology might be dissimilar in different models. Please refer to their manuals for the configuration.

1. In wireless AP utility, push PBC button to generate WPS signal.
2. In AT-WNP300N Wireless Utility, go to “WPS”. Click on “Rescan” to get the WPS signal from the wireless AP.

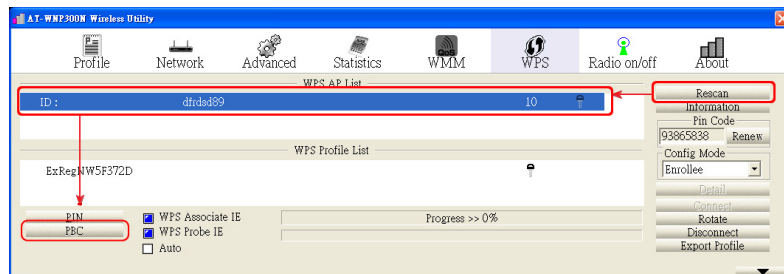


Figure 41: Push Button Connection

3. Select the wireless AP from WPS AP List, and then click on “PBC” to implement the connection. As the connection succeeds, the network is shown in the WPS Profile list.

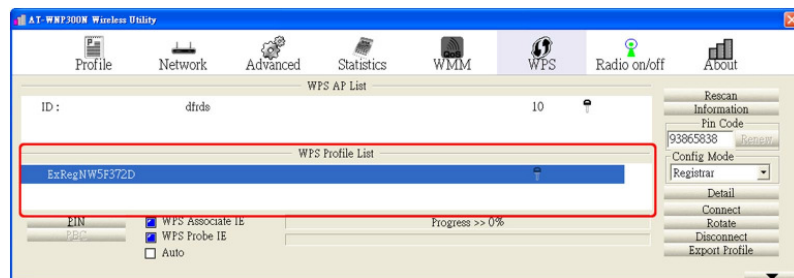


Figure 42: WPS Successfully



Note: After pushing PBC in wireless AP utility, you need to push “PBC” button on wireless adapter in 120 seconds. Otherwise you need to perform the procedure from step 1.

Enter Wireless AP PIN code

1. In wireless AP utility, select generate PIN code and record the 8-character code. Then click on run WPS.



Note: The interface and terminology of wireless AP might be dissimilar in different models. Please refer to their manuals for the configuration.

2. In AT-WNP300N Wireless Utility, go to “WPS”. Switch the Config Mode to “Registrar”. Then input the 8-character PIN code.

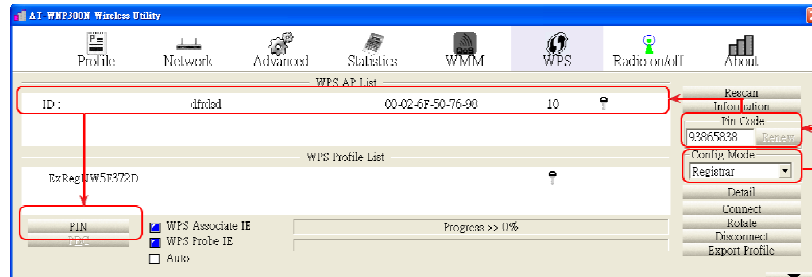


Figure 43: PIN Code

3. Click on “PIN” to connect to the wireless AP. As the connection succeeds, the network is shown in the WPS Profile list.

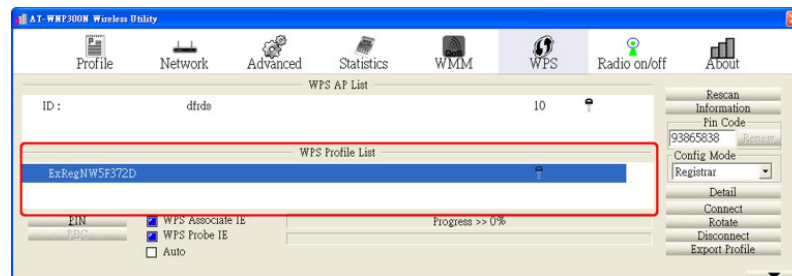


Figure 44: WPS Successfully



Note: After running WPS on wireless AP, you need to push “PIN” button on wireless adapter in 120 seconds. Otherwise you need to perform the procedure from step 1.

Enter Wireless Adapter PIN code

1. In AT-WNP300N Wireless Utility, go to “WPS”. Switch the Config Mode to “Enrollee”. Then record the 8-character PIN code. You can press “Renew” to get a new PIN code.

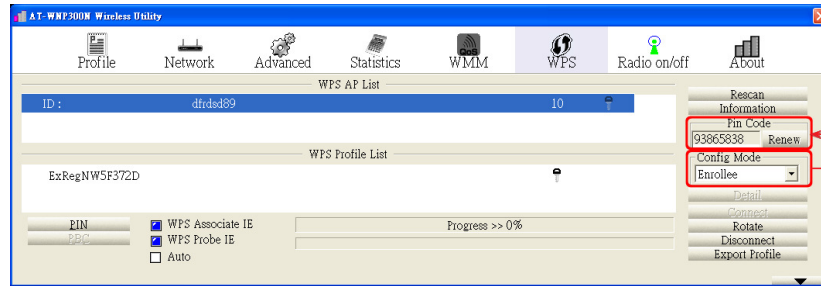


Figure 45: Enrollee Mode

2. In wireless AP utility, input the PIN code and then run WPS.
3. Go back to AT-WNP300N Wireless Utility. In WPS tab, click on “Rescan” to get the WPS signal from wireless AP.

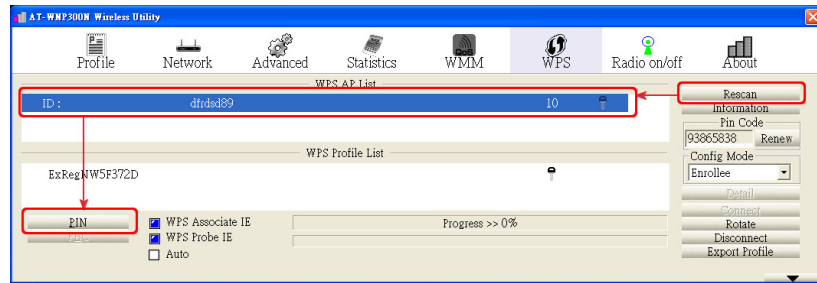


Figure 46: Click on PIN

4. Select the wireless AP from WPS AP List, and then click on “PIN” to implement the connection. As the connection succeeds, the network is shown in the WPS Profile list.

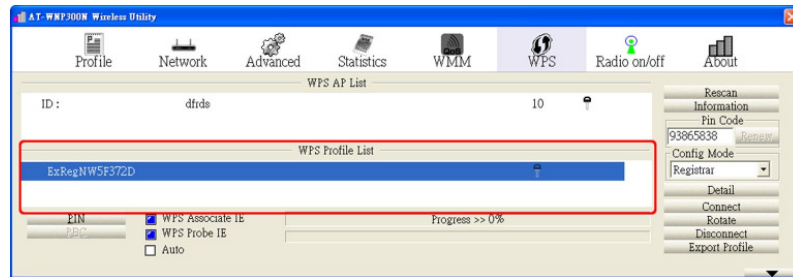


Figure 47: WPS Successfully



Note: After running WPS on wireless AP, you need to push “PIN” button on wireless adapter in 120 seconds. Otherwise you need to perform the procedure from step 1.

Connect to a Regular Network

You can connect to a saved profile to save time. Please perform the following procedure to connect to a regular network.

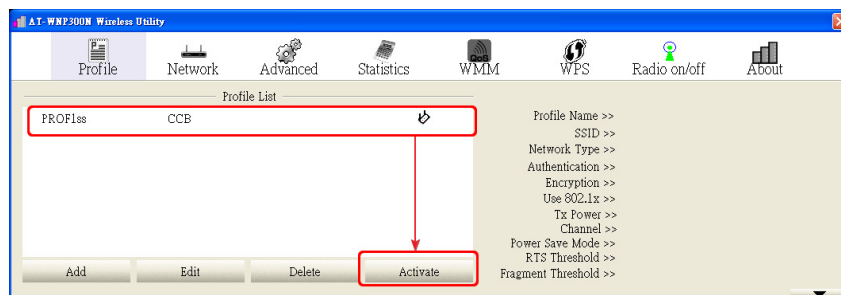


Figure 48: Connect to a Regular Network

1. In "Profile" tab, select a saved profile from profile list.
2. Click on "Active".

Chapter 5: Utility Introduction

Profile

This page shows saved profile information and operation.

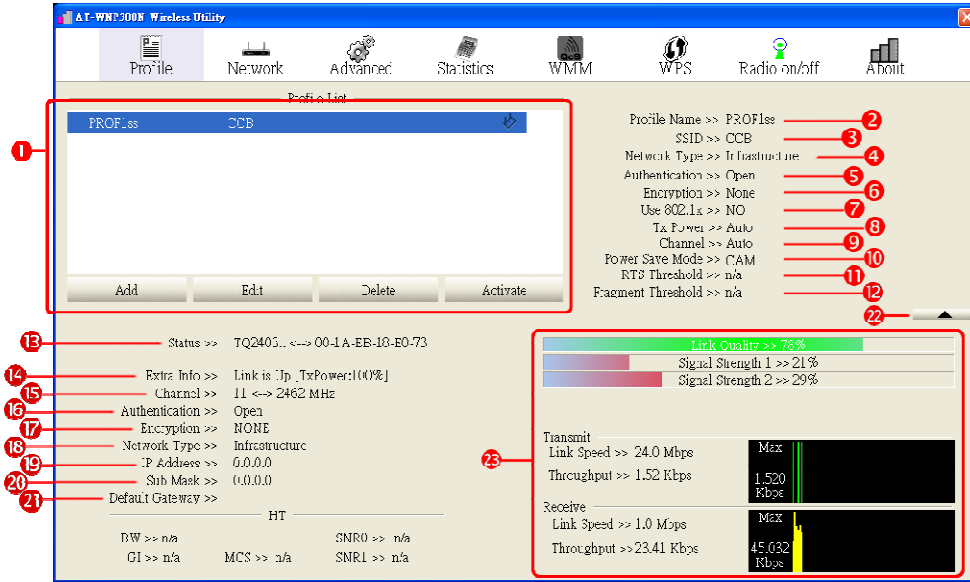



Figure 49: Profile

1	Profile List	<ul style="list-style-type: none"> ➤ Add: Add a new profile. Press “Add” and configure “System config” and “Auth.Energy” tabs to finish the setting. ➤ Edit: Edit a profile. Select the profile you want to edit and press “Edit”. ➤ Delete: Delete a profile. Select the profile you want to delete and press “Delete”. ➤ Active: Active a selected profile.
2	Profile Name	Name of the AP in profile list
3	SSID	SSID of the AP in profile list
4	Network Type	Network type of the AP in profile list
5	Authentication	Authentication of the AP in profile list
6	Encryption	Encryption of the AP in profile list
7	Use 802.1x	Whether the AP supports 802.1x
8	Tx Power	Tx power of the AP in profile list
9	Channel	Channel of the AP in profile list
10	Power Save Mode	Power saving setting of the AP in profile list
11	RTS Threshold	RTS Threshold setting of the AP in profile list
12	Fragment Threshold	The fragment threshold of the AP in profile list
13	Status	The SSID and Mac address of the connecting AP
14	Extra Info	The connection status and the strength of the connecting AP
15	Channel	The channel of the connecting AP
16	Authentication	The authentication of the connecting AP
17	Encryption	The encryption setting of the connecting AP
18	Network Type	The network type of the connecting AP
19	IP Address	Obtained IP of this computer
20	Submask	Current submask
21	Default Gateway	Current default gateway
22	More/Less	Switch to show more or less information

 Link Quality	Show link quality and signal strength information
--	---

Network

This page shows current available network.

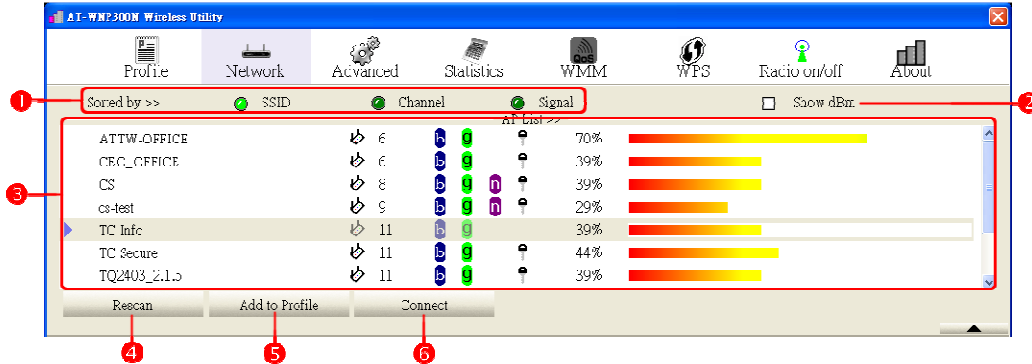










Figure 50: Network

1	Sort by >>	Click to sort by SSID/Channel/Signal
2	Show dBm	Show signal strength by dBm
3	AP List	Show available AP. The meaning of icons is described as following:  : The network is successfully connected.  : The device is an AP  : The device is an ad-hoc  : The device is compatible with 802.11b  : The device is compatible with 802.11g  : The device is compatible with 802.11n  : The device is applying WPS  : The network is secured
4	Rescan	Rescan available wireless network
5	Add to Profile	Add selected network to profile
6	Connect	Connect to selected network

Advanced

You can configure advanced settings in this page.

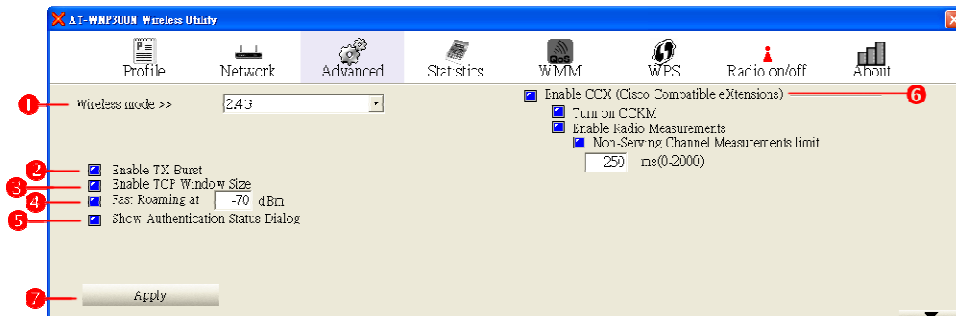


Figure 51: Advanced

❶	Wireless mode	It shows AT-WNP300N wireless mode
❷	Enable TX Burst	Check to enable TxBurst to transmission throughput. (It only works when wireless AP supports this feature)
❸	Enable TCP Windows Size	Enlarge TCP Layer windows size, it could promote data receiving rate
❹	Fast Roaming at	Swift to roaming mode at specific dBm
❺	Show Authentication Status Dialog	Check to show authentication status dialog. When you
❻	Enable CCX (Cisco Compatible eXtensions)	Check this only connecting to Cisco device
❼	Apply	Click to apply settings

Statistics

This page shows statistics information.

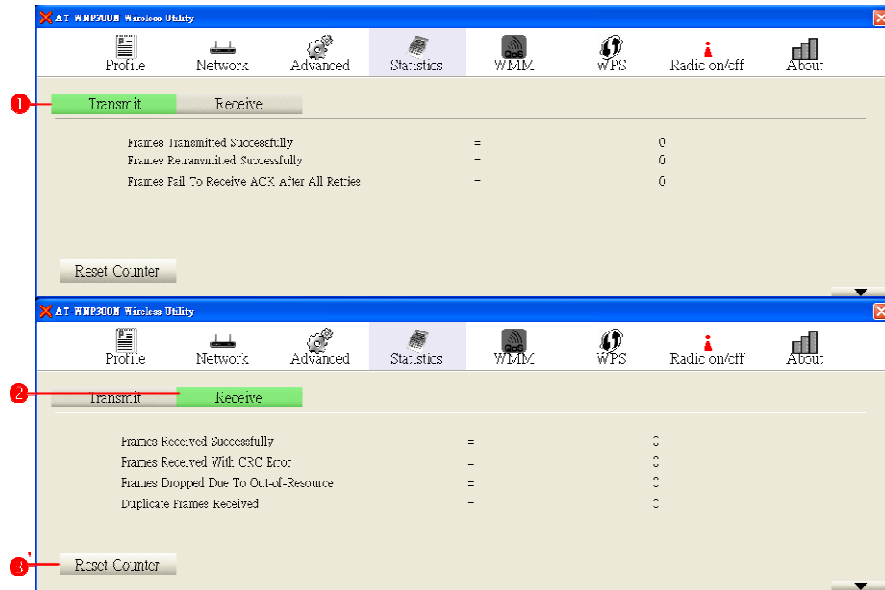


Figure 52: Statistics

❶	Transmit	Show transmit pocket information
❷	Receive	Show receive pocket information
❸	Reset Counter	Reset the counter to zero

WMM

WMM enhance audio/video transmission quality. You can configure relative settings here.

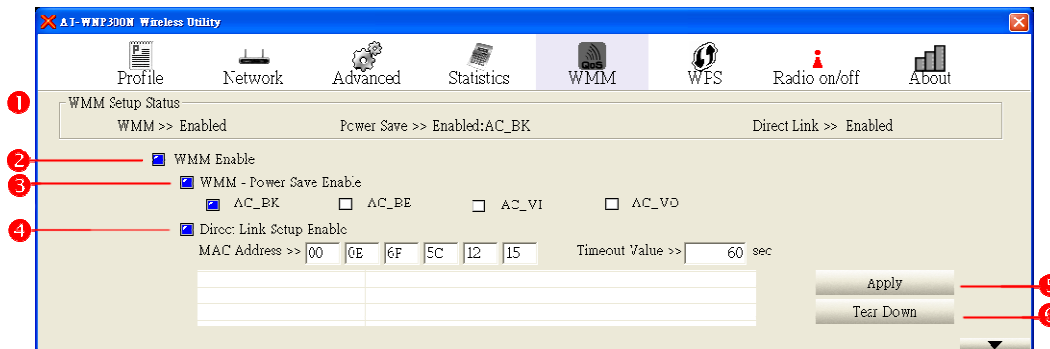


Figure 53: WMM

❶	WMM Setup Status	Show current WMM status
❷	WMM Enable	Check to enable WMM, which promotes audio and voice quality
❸	WMM – Power Save Enable	Check the box to enable power saving. The options are describe as following: > AC_BK: Background > AC_BE: Best Effort > AC_VI: Video > AC_VO: Voice
❹	Direct Link Setup Enable	Check this box to directly connect to another WMM wireless device. Please input the Mac address of the device. Input 1~65535 for idle timeout. Input 0 to keep connection
❺	Apply	Click to apply settings
❻	Tear Down	Click to disconnect

WPS

Wireless Protected Setup (WPS) provides an easy way to connect to a wireless network.

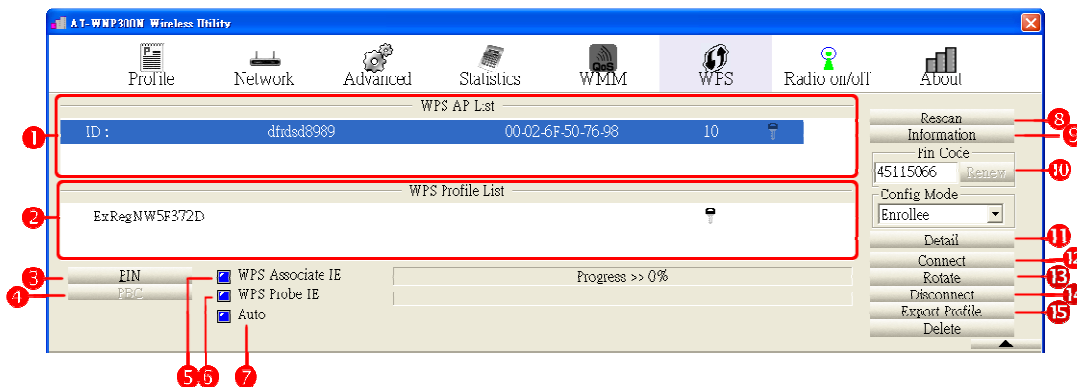


Figure 54: WPS

❶	WPS AP List	Show available WPS AP
❷	WPS Profile List	Show saved WPS profile
❸	PIN	Click to start a PIN connection
❹	PBC	Click to start a PBC connection
❺	WPS Associate IE	Check this box to send WPS IE connection request signal during WPS process
❻	WPS Probe IE	Check this box to send WPS IE connection probe signal during WPS process
❼	Auto	Check this box to automatically select AP in PIN mode
❸	Progress	Show connection status
❹	Rescan	Rescan WPS signal

10	Information	Show information of selected WPS network
11	Pin Code	Generate a PIN to connect to a wireless AP; or insert PIN code form wireless AP
12	Config Mode	Switch to Enrollee or registrar mode
13	Detail	Show information of connected WPS network
14	Connect	Connect a WPS connection from the WPS profile list
15	Rotate	Shift to another WPS connection
16	Disconnect	Disconnect a WPS connection
17	Export Profile	Export the WPS connection to profile
18	Delete	Delete a WPS profile from the list

Radio on/off

A green icon means that wireless feature is enabled. Click on the icon to switch the radio off. A red icon means that wireless feature is disabled.

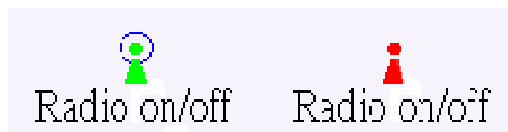


Figure 55: Radio On/Off

About

This page shows information on driver and firmware version.

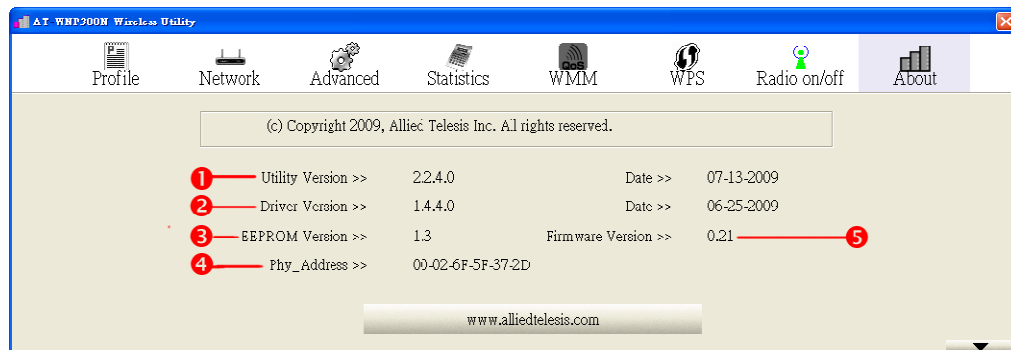


Figure 56: About

1	Utility Version	Utility version of AT-WNP300N
2	Driver Version	Driver version of AT-WNP300N
3	EEPROM Version	EEPROM version of AT-WNP300N
4	Phy_Address	Mac address of AT-WNP300N
5	Firmware Version	Firmware version of AT-WNP300N

Chapter 6: Troubleshooting

I Cannot Build Wireless Connection

Please check the following:

- Is the wireless adapter inserted to PCI slot correctly?
- Are the driver and the utility installed correctly?
- Is the wireless AP providing service which covers the wireless adapter?
- Is the encrypted key entered correctly?
- Is the wireless communication specification of the AP compliant with the adapter?

The Hardware Status Is Incorrect

If encountering the following incorrect situations,

- The Device Manager shows an unknown device with [!] or [?] icons in Network adapters.
- The Device Manager does not show the device in Network adapters.
- The Device Manager shows more than one "Wireless LAN PCI card" items in Network adapters.

Please perform the following steps:

1. Right click on the device item and select "Delete".
2. Press "OK" when the confirmation dialog box shows up.
3. Re-install the driver and the utility according to Chapter 2.

In Device Manager, the Device Shows a Cross.

A cross means the device is temporarily disabled. Please perform the following steps:

1. In Device Manager, right click on the device item.
2. Select "Enable" to start up the device.

Appendix A: Technical Specifications

Physical Specifications

Standard	IEEE802.11b, IEEE802.11g, 802.11n (2.0)
Physical Interface	PCI 2.2 slot
Operating Voltage	3.3V
Antenna	2dBi Dipole Antenna (2.4GHz)
RF Connector	SMA Female-Reverse
Dimensions(PCB):	120 mm x 63 mm (W x D) (4.72 in. x 4.07 in.)

Environmental Specifications

Operating Temperature:	0 to 45°C
Storage Temperature:	-10 to 70°C
Operating Humidity:	15 to 95% (non-condensing)
Storage Humidity:	15 to 95% (non-condensing)
Operating Altitude Range:	3,000 m

Safety and Electromagnetic Emissions Certifications

EMI/RFI and Immunity:	FCC marked (Compliant with FCC Part 15 Class B; FCC Part 15B and 15C); CE Marked (compliant with EN 300 328; EN 301 489; EN 55022; EN61000; EN50385); C-Tick marked (Compliant with AS/NZS / CISPR 22 Class B)
Electrical Safety:	CE Marked (compliant with EN60950-1)

Appendix B: Radio Bands

Allied Telesis's AT-WNP300N IEEE802.11b/g/n IT2R Wireless Fast PCI adapter is capable of operating in the 2.4GHz (IEEE 802.11b/g/n).

IEEE 802.11n standard provides a major improvement in the speed at which data can be transferred over a wireless network. The amount of data being passed over most networks is increasing with many more large files, including photos, video clips (and videos), etc. being transferred.

IEEE 802.11n standard uses Multiple Input Multiple Output (MIMO) exploiting multipath propagation; that increases the data rate by using a technique known as spatial division multiplexing. The data is split into a number of spatial streams and these are transmitted through separate antennas to corresponding antennas at the receiver. Increasing the spatial streams you get a greater utilization of the available bandwidth.